

**基本規格SPECIFICATIONS**

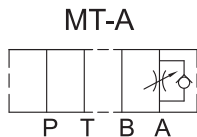
MT-02-30 系列 SERIES			
最大工作壓力 Maximum Pressure	bar	210 bar ( 3000 PSI )	
最大流量 Maximum Flow	LPM	40 LPM ( 10.6 GPM )	
重量 Weight	型式 Code: A,B	Kgs	1.4 Kgs ( 3.1 Lbs )
	型式 Code: W	Kgs	1.5 Kgs ( 3.3 Lbs )
使用油品 Fluid Type	礦物性 耐磨性 Mineral, Anti-Wear		
黏度範圍 Viscosity	cST	10-400 cST ( 59-1854 SSU )	
使用溫度 Operating Temperature	°C	-15-70°C ( -5-158°F )	
清潔度 Contamination Level	NAS 12 級以內 Under NAS Class 12		
表面處理 Surface Treatment	磷酸鹽皮膜處理 Zinc Phosphate Compound		

**型號說明HOW TO ORDER**

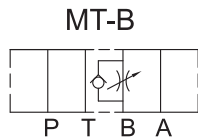
**MT - 02 W - I - 30 - K**

① ② ③ ④ ⑤ ⑥

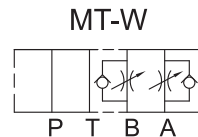
- ① 閥系列 Valve Series  
 MT = 疊加式單向節流閥  
 Modular Flow Control With Check Valve
- ② 通稱口徑 Subplate Mounting Size  
 02 = 通稱 Nominal 1 / 4" ( 6mm )  
 ISO CETOP3  
 DIN NG6  
 NFPA D03
- ③ 控制迴路 Control Port
- ④ 控制方式 Control Option  
 省略 = 出口流量控制 Omit = Meter Out  
 I = 入口流量控制 I = Meter In
- ⑤ 設計型號 Design No.
- ⑥ 調整桿型式 Adjustment  
 省略 = 內六角調整  
 Omit = Hex. Screw With Nut  
 K = 旋鈕調整 Knob



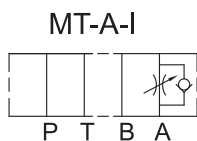
**A 出口控制迴路**  
 ( A Meter Out )



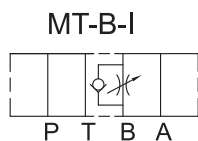
**B 出口控制迴路**  
 ( B Meter Out )



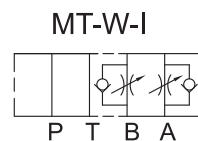
**A&B 出口控制迴路**  
 ( A&B Meter Out )



**A 入口控制迴路**  
 ( A Meter In )



**B 入口控制迴路**  
 ( B Meter In )

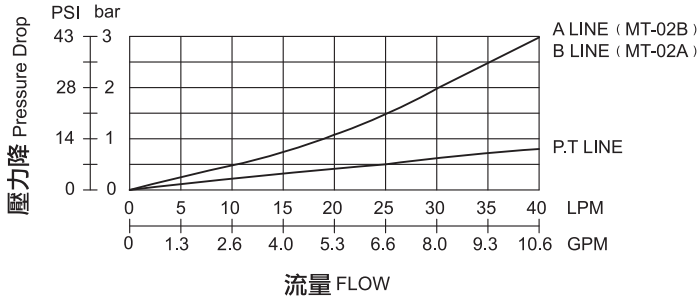


**A&B 入口控制迴路**  
 ( A&B Meter In )

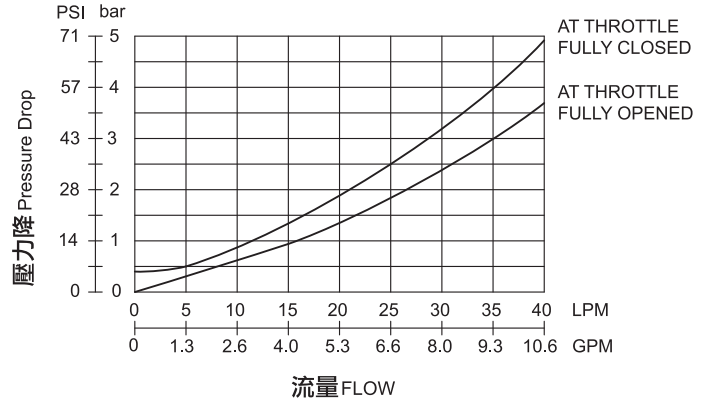
**特性曲線 PERFORMANCE**

測試條件 Test Conditions  
 溫度 Oil Temperature: 50°C  
 黏度 Viscosity: 35cST (163 SSU)

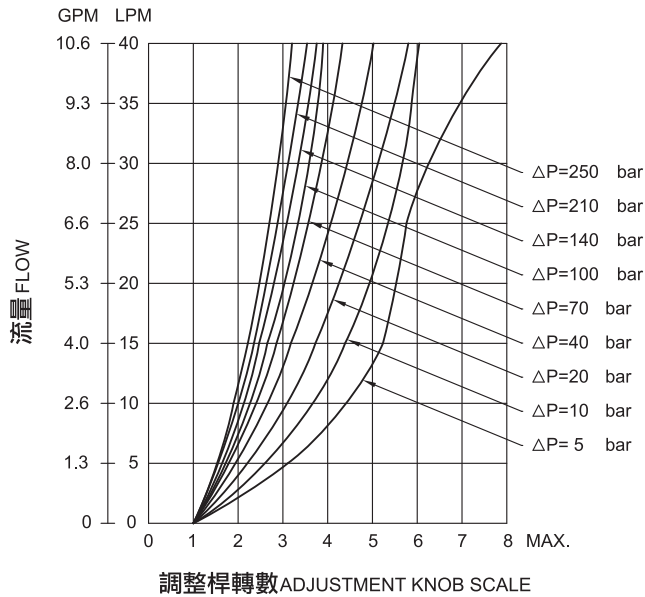
**壓力降特性曲線 PRESSURE DROP**



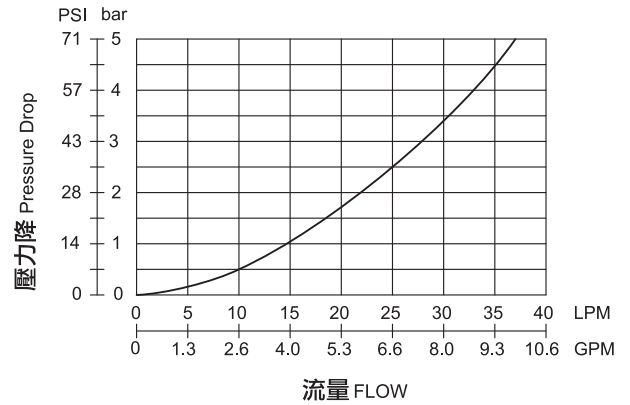
**壓力降特性曲線(自由流) PRESSURE DROP ( FREE FLOW )**



**節流旋扭開度-流量特性曲線 FLOW vs. TURNS FROM CLOSED**



**壓力降特性曲線 滑柱全開) PRESSURE DROP ( FULLY OPEN )**



**流量調整方式**

調整流量時,放鬆鎖緊螺母,慢慢轉動手柄,順時針為流量減少,逆時針為流量增加。  
 調整完畢,不可忘記鎖緊螺母。

**Flow Setting**

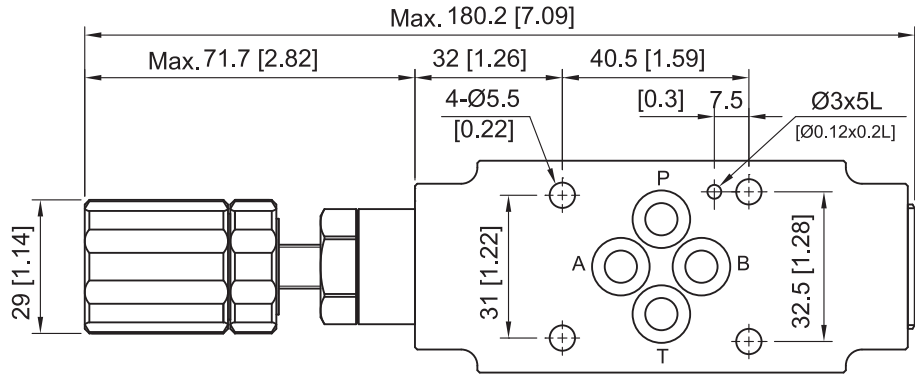
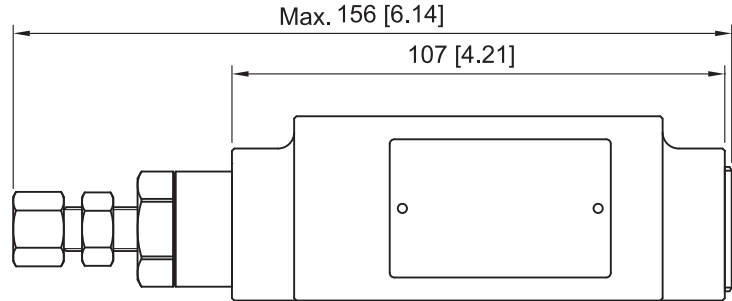
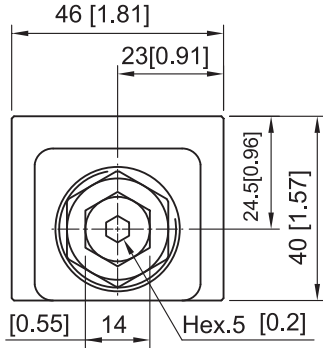
Facing to adjustment screw or knob, clockwise decreasing flow, counterclockwise increasing flow.  
 Please tighten hex. nut or plastic setting nut after flow adjusted.

**外型尺寸 DIMENSIONS**

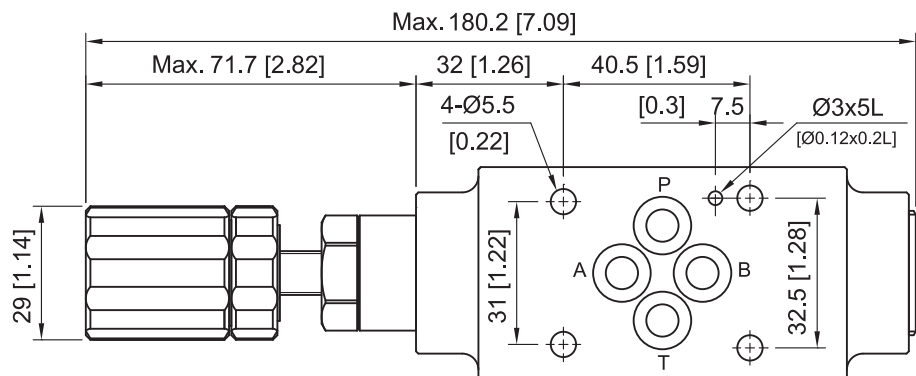
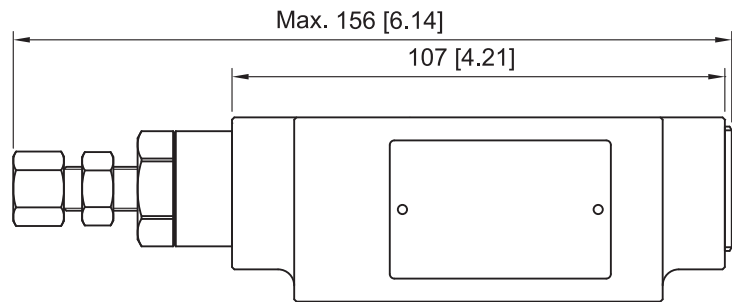
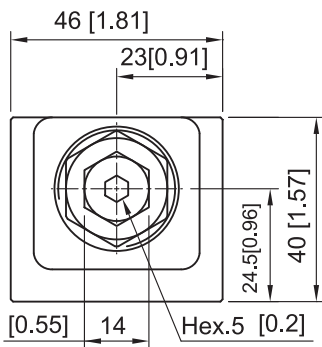
**安裝面**

Mounting Interface:  
 ISO 4401-AB-03-4-A

MT-02A-I-40



MT-02A-40

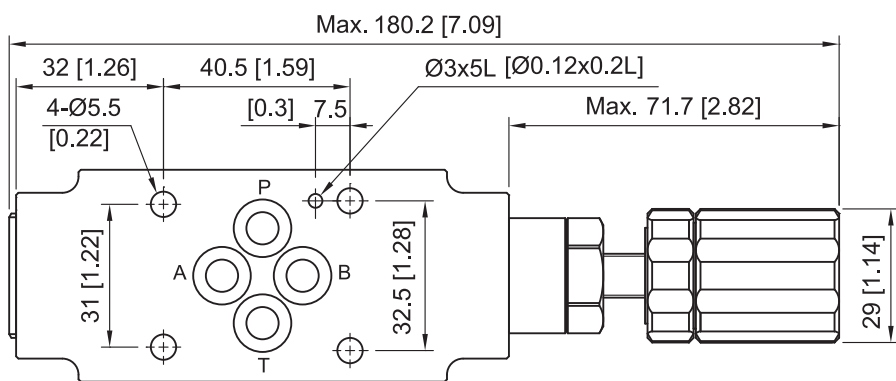
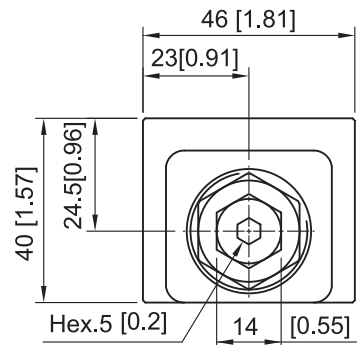
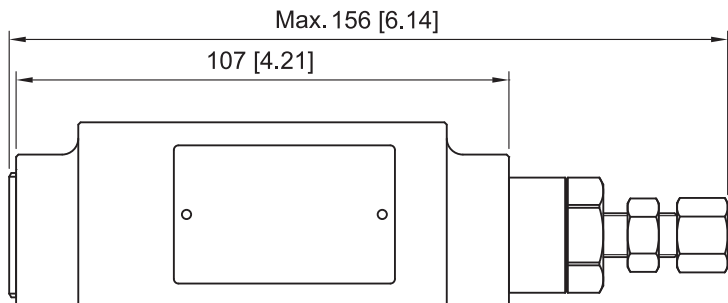


**外型尺寸 DIMENSIONS**

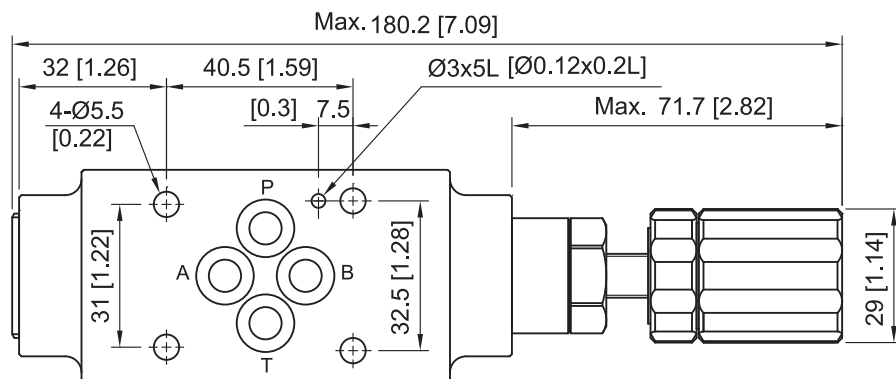
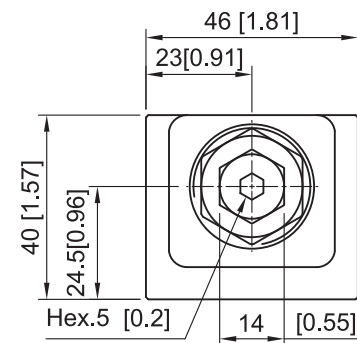
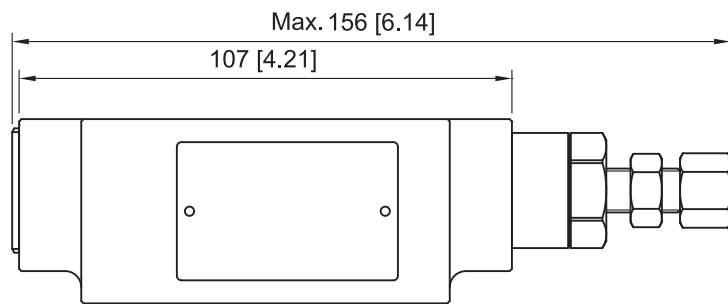
MT-02B-I-40

**安裝面**

Mounting Interface:  
 ISO 4401-AB-03-4-A



MT-02B-40

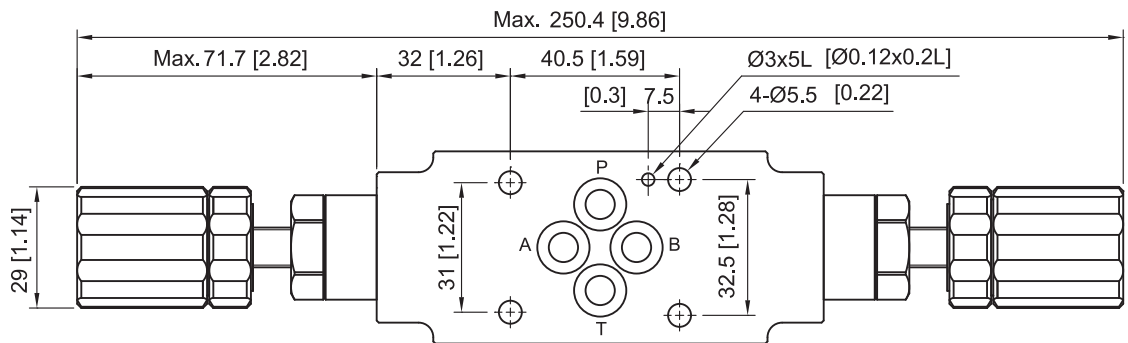
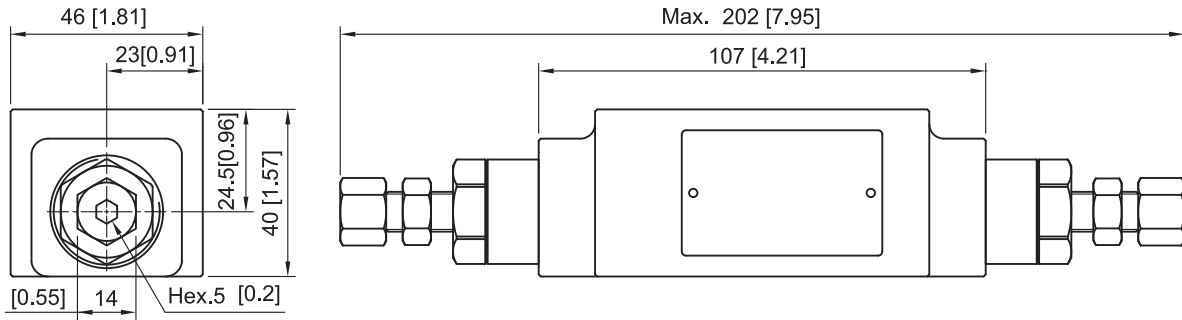


**外型尺寸 DIMENSIONS**

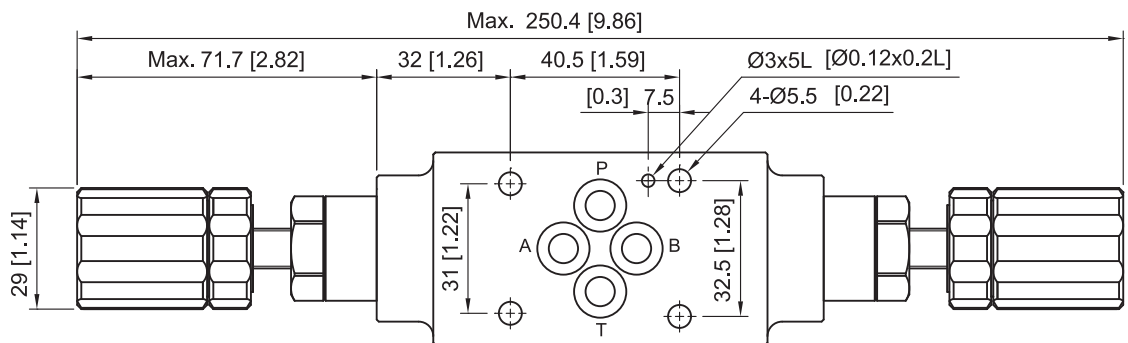
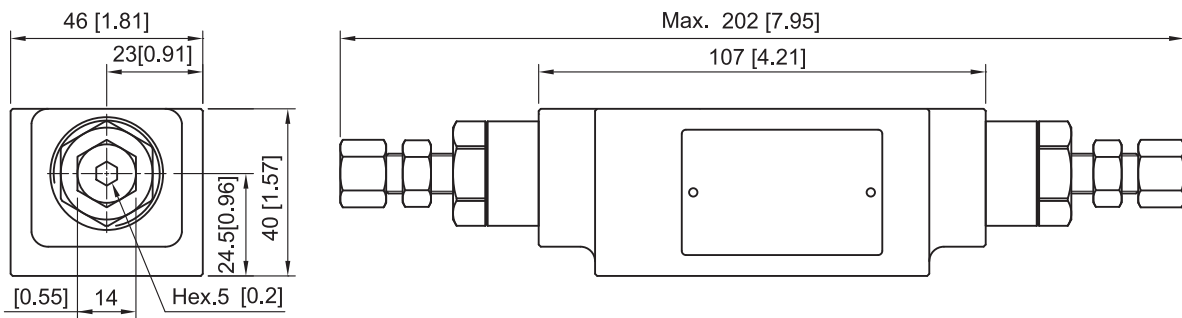
MT-02W-I-40

**安裝面**

Mounting Interface:  
 ISO 4401-AB-03-4-A

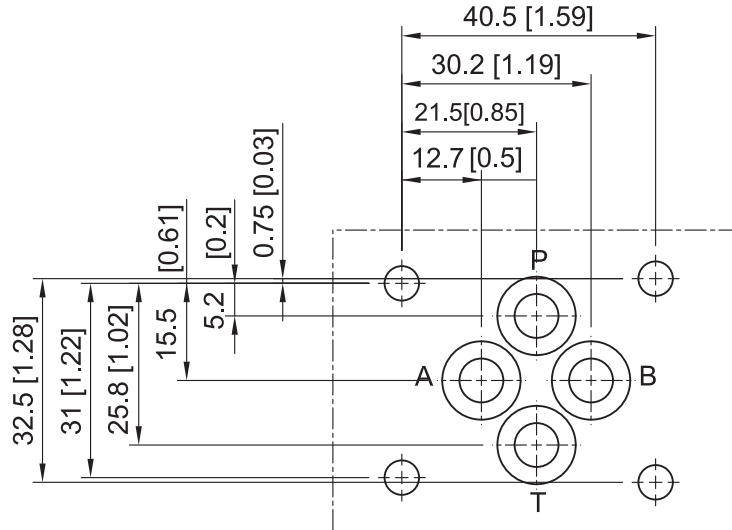


MT-02W-40



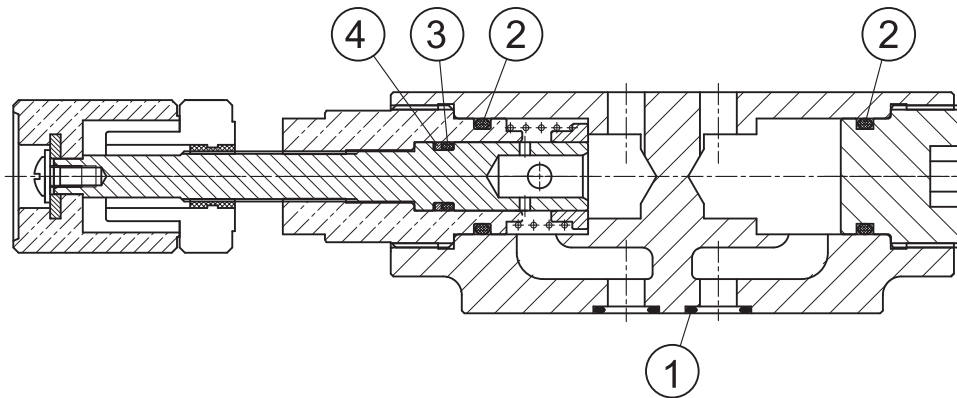
**安裝面 MOUNTING INTERFACE**

ISO 4401-AB-03-4-A

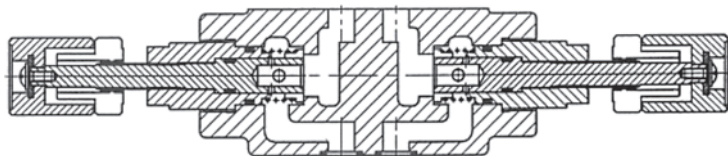


**密封件 SEAL KITS**

MT-02-A / B / W-40



NO.	種類 Description	型號 Specification	數量 Q'ty	
			A / B	W
1	○型環 O-ring	AS568-012 HS90°	4	4
2	○型環 O-ring	P18 HS70°	2	2
3	○型環 O-ring	P10 HS70°	1	2
4	背托環 Back-up Ring	P10*1.2T	1	2



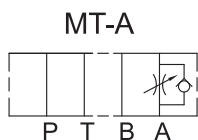
**基本規格 SPECIFICATIONS**

MT-03 系列 SERIES		
最大工作壓力 Maximum Pressure	bar	210 bar ( 3000 PSI )
最大流量 Maximum Flow	LPM	70 LPM (18.5 GPM)
重量 Weight	型式 Code: A,B	2.7 Kgs ( 6.0 Lbs )
	型式 Code: W	2.9 Kgs ( 6.4 Lbs )
使用油品 Fluid Type		礦物性 耐磨性 Mineral,Anti-Wear
黏度範圍 Viscosity	cST	10-400 cST ( 59-1854 SSU )
使用溫度 Operating Temperature	°C	-15-70°C (-5-158°F)
清潔度 Contamination Level		NAS 12 級以內 Under NAS Class 12
表面處理 Surface Treatment		磷酸鹽皮膜處理 Zinc Phosphate Compound

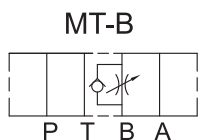
**型號說明 HOW TO ORDER**

**MT- 03 W- I - 30 - K**  
 ① ② ③ ④ ⑤ ⑥

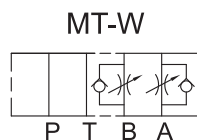
- ① 閥系列 Valve Series  
 MT = 疊加式單向節流閥  
 Modular Flow Control With Check Valve
- ② 通稱口徑 Subplate Mounting Size  
 03 = 通稱 Nominal 3 / 8" ( 9mm )  
 ISO CETOP5  
 DIN NG10  
 NFPA D05
- ③ 控制迴路 Control Port
- ④ 控制方式 Control Option  
 省略 = 出口流量控制 Omit = Meter Out  
 I = 入口流量控制 I = Meter In
- ⑤ 設計型號 Design No.
- ⑥ 調整桿型式 Adjustment  
 省略 = 內六角調整  
 Omit = Hex. Screw With Nut  
 K = 旋鈕調整 Knob



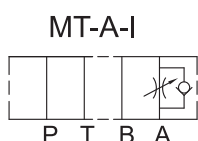
**A 出口控制迴路**  
 ( A Meter Out )



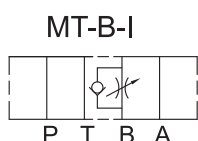
**B 出口控制迴路**  
 ( B Meter Out )



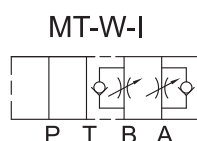
**A&B 出口控制迴路**  
 ( A&B Meter Out )



**A 入口控制迴路**  
 ( A Meter In )



**B 入口控制迴路**  
 ( B Meter In )

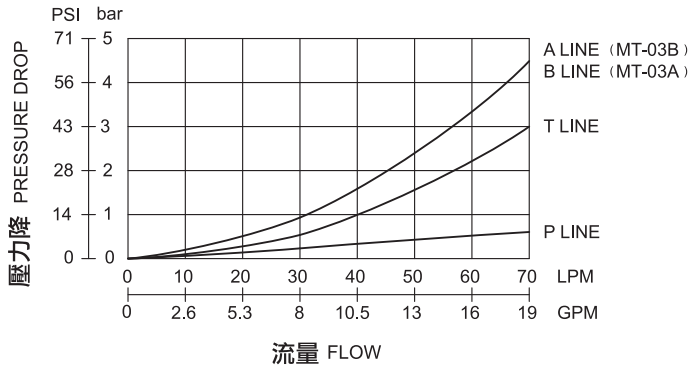


**A&B 入口控制迴路**  
 ( A&B Meter In )

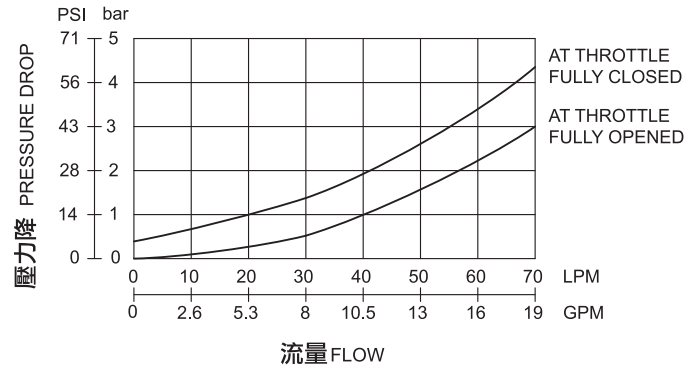
**特性曲線 PERFORMANCE**

測試條件 Test Conditions  
 溫度 Oil Temperature: 50°C (122 °F)  
 黏度 Viscosity: 35cST (163 SSU)

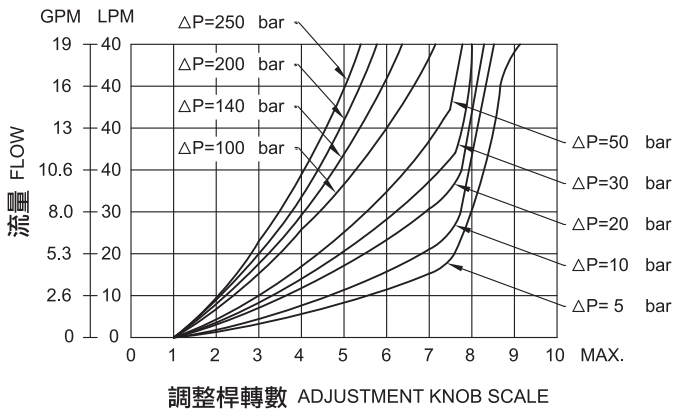
**壓力降特性曲線 PRESSURE DROP**



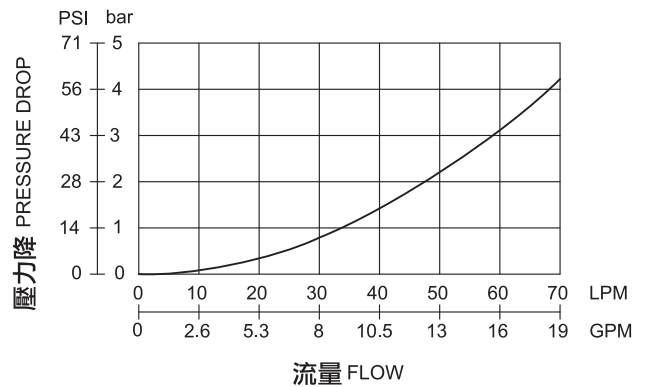
**壓力降特性曲線(自由流) PRESSURE DROP (FREE FLOW)**



**節流旋扭開度-流量特性曲線 FLOW vs. TURNS FROM CLOSED**



**壓力降特性曲線(滑柱全開) PRESSURE DROP (FULLY OPEN)**



**流量調整方式**

調整流量時,放鬆鎖緊螺母,慢慢轉動手柄,順時針為流量減少,逆時針為流量增加。  
 調整完畢,不可忘記鎖緊螺母。

**Flow Setting**

Facing to adjustment screw or knob, clockwise decreasing flow, counterclockwise increasing flow.  
 Please tighten hex. nut or plastic setting nut after flow adjusted.

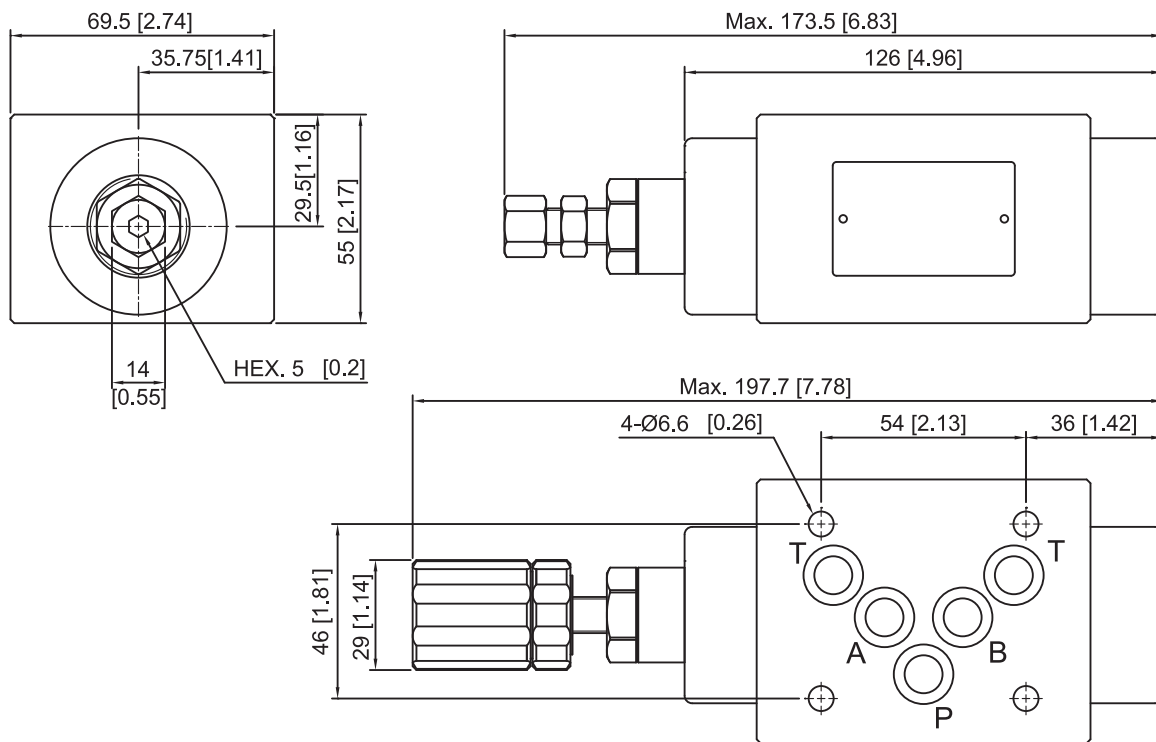


**外型尺寸DIMENSIONS**

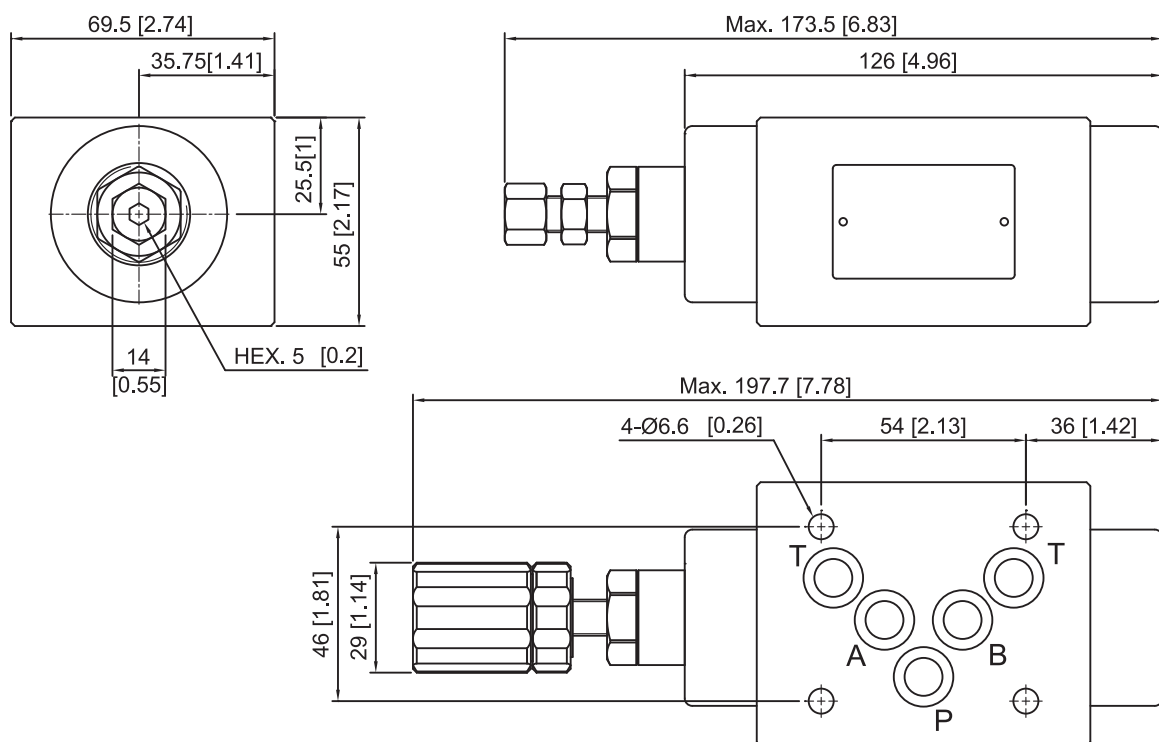
MT-03A-I

**安裝面**

Mounting Interface:  
 ISO 4401-AC-05-4-A



MT-03A

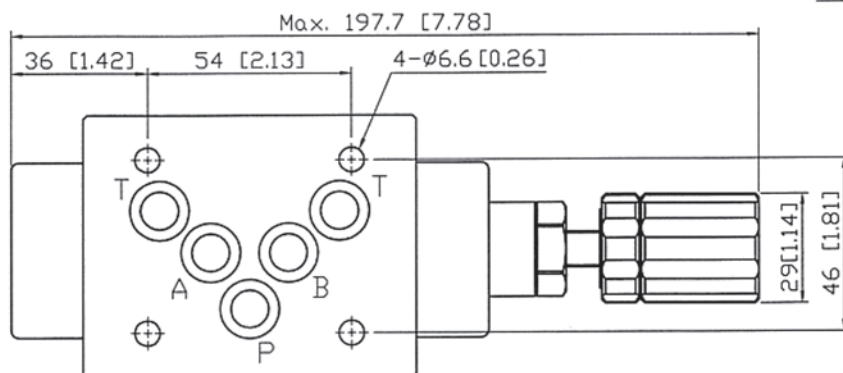
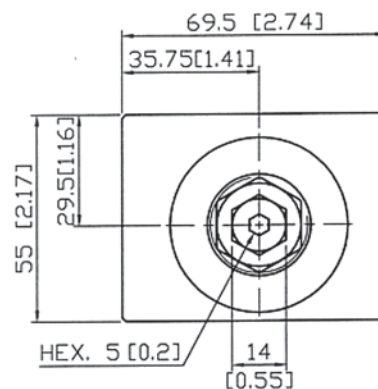
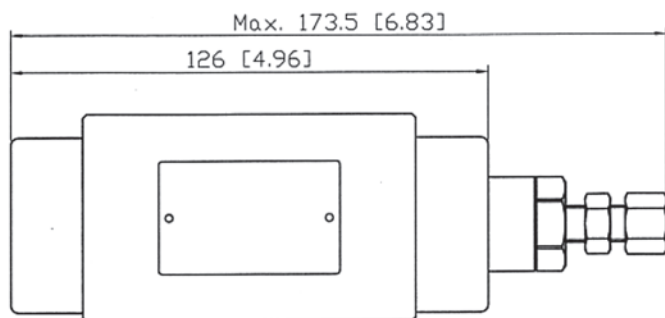


**外型尺寸 DIMENSIONS**

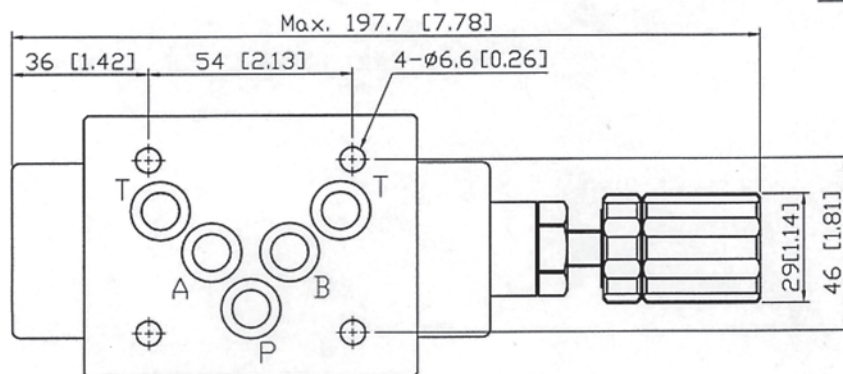
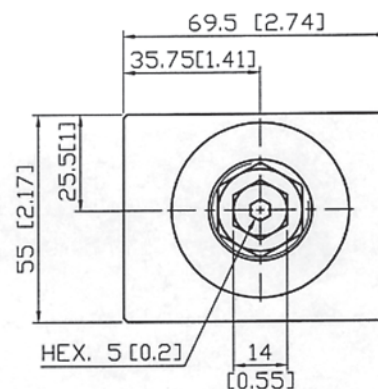
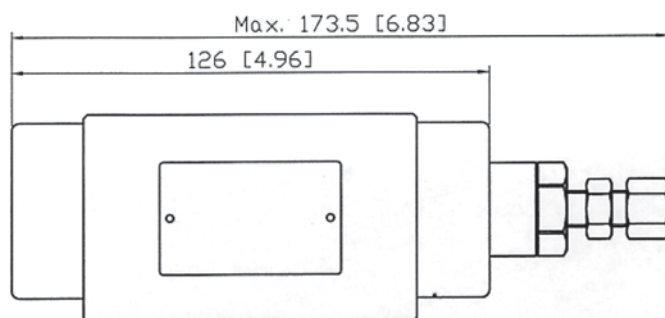
MT-03B-I

**安裝面**

Mounting Interface:  
 ISO 4401-AC-05-4-A



MT-03B

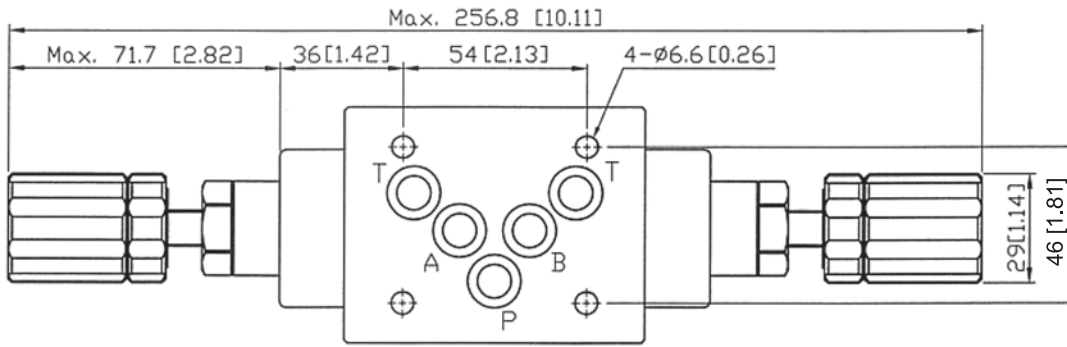
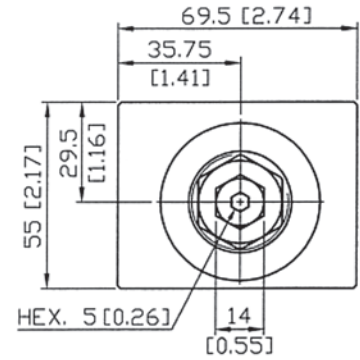
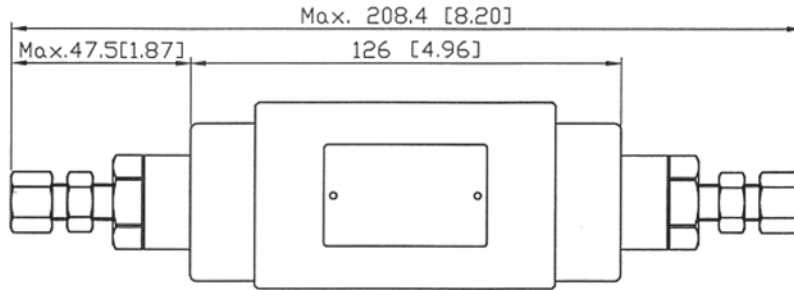


**外型尺寸 DIMENSIONS**

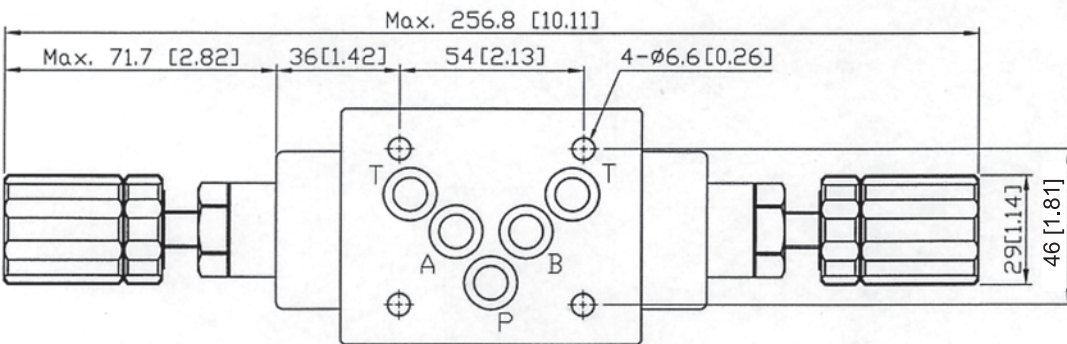
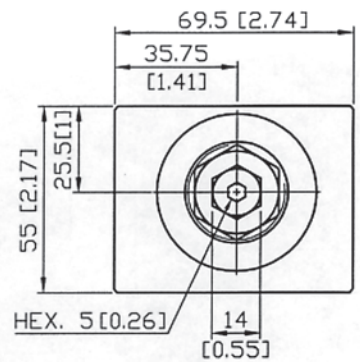
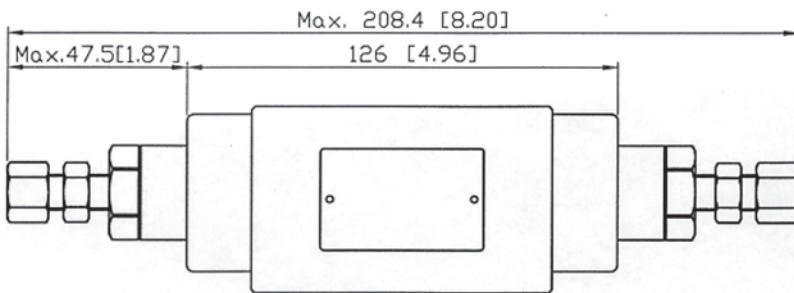
MT-03W-I

**安裝面**

Mounting Interface:  
 ISO 4401-AC-05-4-A

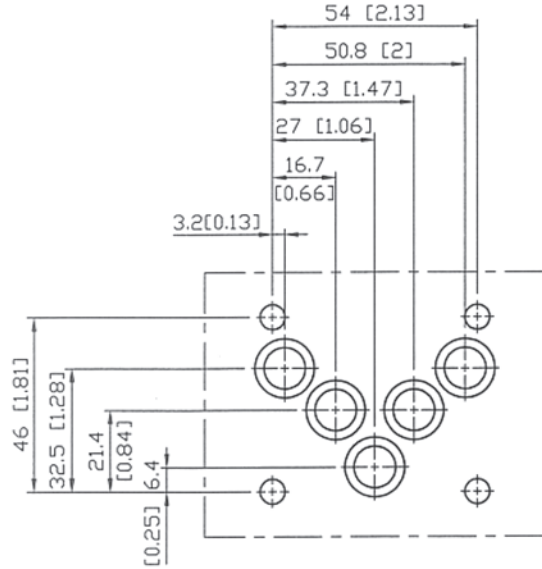


MT-03W



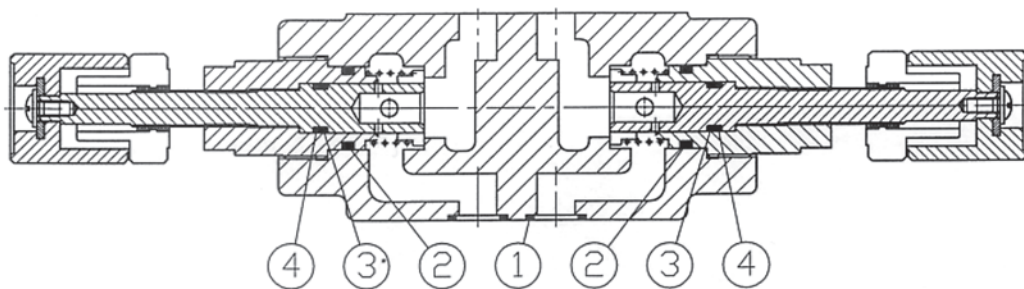
**安裝面 MOUNTING INTERFACE**

ISO 4401-AC-05-4-A



**密封件 SEAL KITS**

MT-03 W/A / B



NO.	種類 Description	型號 Specification	數量 Q'ty	
			A / B	W
1	O 型環 O-ring	AS568-014 HS90*	5	5
2	O 型環 O-ring	P-18 HS70*	2	2
3	O 型環 O-ring	P-10 HS70*	1	2
4	背托環 Back-up Ring	P-10*1.25T	1	2